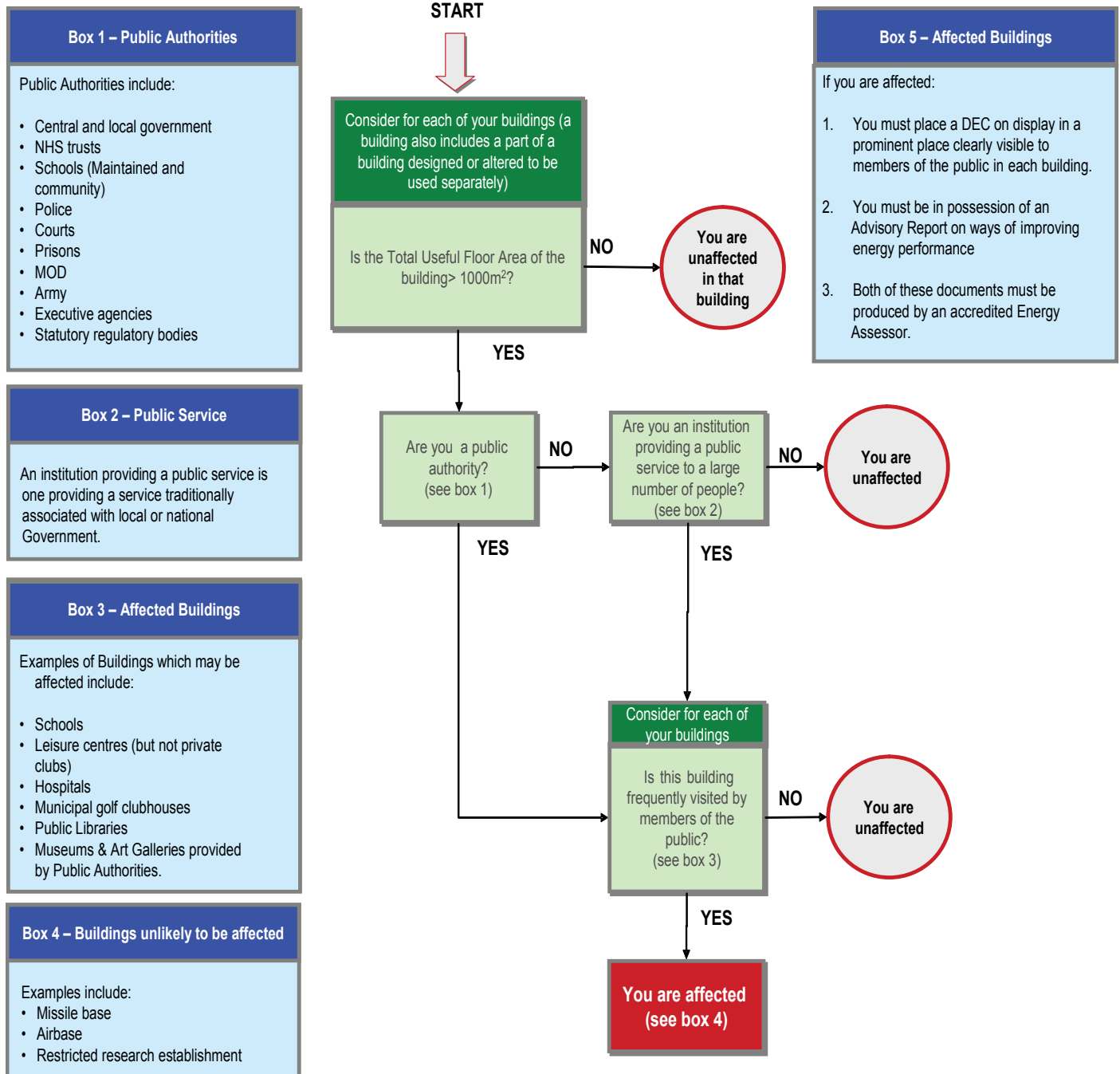


## Flowchart for deciding whether your building needs a Display Energy Certificate (DEC).

This decision making guide is from the official guidance publication “A guide to Display Energy Certificates and advisory reports for public buildings” published by Communities and Local Government 9th May 2008 (ISBN 978-8511-2981-2 )



The guidance also contains the following text:

*Environmental performance is increasingly important to reputation. Accordingly if there is any doubt over whether a DEC is required, it would be good practice to produce a DEC in any event.*

A local authority can issue a penalty charge notice of £500 for failing to display a DEC at all times in a prominent place clearly visible to the public, and £1,000 for failing to possess or have in their control a valid advisory report. In addition to these penalties, it will still be necessary to commission the documents, otherwise further offences will be committed.

It is worth considering that the purpose of a DEC, and more importantly the accompanying advisory report, is to identify ways to reduce energy consumption and monitor success in doing so. A DEC helps reduce the building’s carbon footprint AND save money so why wouldn’t an organisation want one?